

TARDY POLICY

Expectation: Students are in class on time every period every day.

Violations (QUARTERLY):

1st Tardy = Warning

2nd Tardy = Warning

3rd Tardy = Warning

4th Tardy = Warning

5th Tardy = Final Warning, **REFERRAL** and conference with dean

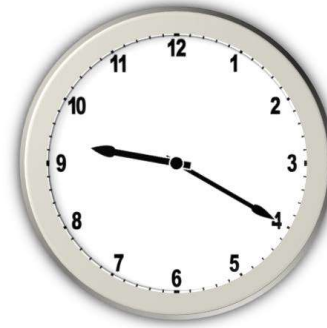
6th Tardy = Referral, 1 day lunch detention

7th Tardy = Referral, 1 day lunch detention

8th Tardy = Referral, 1 period of ISS

9th Tardy = Referral, 1 period of ISS

10th Tardy (or more) = 1 day ISS



Additional consequences for drivers:

- 6th Tardy/absence to first class period of the day: Parent Contact
- 7th Tardy/absence to first class period of the day: Loss of parking pass for 5 days
- 8th (or more) Tardies/absences to first class period of the day: Loss of parking pass for 10 days

Tardies WILL NOT be removed or negotiated, since all students will start with a clean state EACH quarter.

